

The discreet solution to a fly free home

Please read these instructions carefully and store in a safe place for future reference.

PRISM™

As part of the **Insect-O-Cutor®** brand of insect control products, **PRISM™** is an easy to service and highly effective insect control unit for use within your kitchen, conservatory or lounge area. **PRISM™** uses a highly effective UV tube and is designed for use with a high specification Glupac® glueboard. The patented glueboard technology ensures the user doesn't come into contact with caught flies.

Contents of package

- 1 x PRISM™ flykiller
- 1 x Glupac® glueboard
- 1 x Compact 11W tube (fitted)

Warning

PRISM™ is not to be used by children or persons with reduced physical, sensory or mental capabilities, or lack of experience and knowledge, unless they have been given supervision or instruction. Children should be supervised to ensure they do not play with the appliance.

If the mains cable is damaged it must be replaced by the manufacturer, its service client or similarly a qualified person to avoid hazard.

Not suitable for applications where potentially explosive environments may exist.

Positioning and guidance for use

THIS UNIT IS FOR INDOOR USE ONLY. NOT SUITABLE FOR USE IN BARNs, STABLES & SIMILAR LOCATIONS.

PRISM™ SHOULD BE KEPT OUT OF REACH OF CHILDREN.

PRISM™ should ideally be positioned in the darkest place within the area to be protected. The unit will work best if it is placed away from windows, skylights or other sources of light, or where it may be obscured by furniture, doors or other obstacles. Ideally, **PRISM™** should be visible from every part of the area to be protected.

PRISM™ should preferably be in operation for 24 hours a day to ensure that the area is kept free of flying insects. Insects are most attracted to **PRISM™** at night when there is no competition from daylight or other light sources.

Guarantee

PRISM™ has a 2 year guarantee and if maintained as recommended in these instructions should continue to work for many years. This guarantee excludes the tube and the glueboard and it does not cover breakdown due to misuse, incorrect operation or use in an incorrect application. Any use of non-approved consumables may invalidate the guarantee. Ensure that a genuine Glupac® glueboard and Philips UV tube are used in conjunction with this product.

Installation

Once **PRISM™** is correctly positioned on a horizontal surface, the glueboard must then be fitted. In order to do this correctly, remove the glueboard from the back of the unit, remove the brown Glupac® paper to reveal the glue, then put the glueboard back into the unit as described in the glueboard replacement section of this document.

PRISM™ has a plug fitted to the mains lead and once installed in position, should be plugged into the nearest mains outlet.

Cleaning

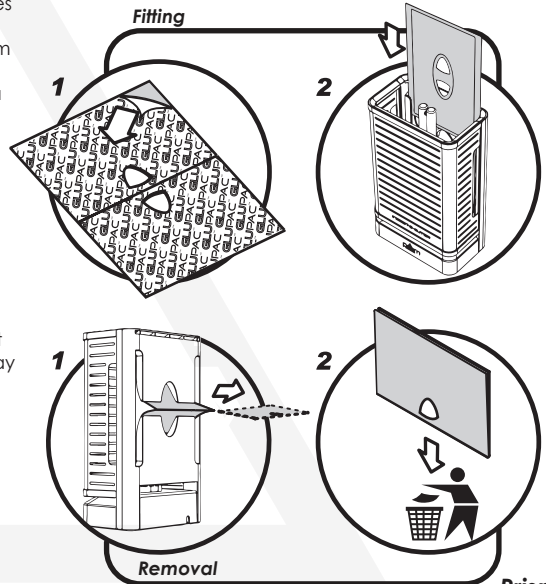
It is recommended that cleaning is carried out when the glueboard is replaced. Ensure that the unit has been disconnected from the power supply before cleaning. Once the glueboard is removed, the unit should be thoroughly wiped down with a damp cloth, removing any build-up of dirt. Ensure the unit is completely dry before reconnecting it to the power supply.

Glueboard replacement

The glueboard should be replaced every month with a genuine Glupac® glueboard. Use of non-approved glueboards may invalidate your guarantee. To replace the glueboard:

1. Ensure the unit is disconnected from the power supply.
2. Position **PRISM™** so the back is facing you.
3. Using one hand to support the unit, use your thumb and forefinger of your other hand to gently pull the used glueboard out through the slot in the back of the unit.
4. Once free from the unit, dispose of the used glueboard hygienically.
5. Remove the brown release paper from the new Glupac® glueboard to reveal the glue.
6. Slowly slide the new glueboard into position along the two runners with the glue side facing the tube.

Always ensure that the glueboards used are genuine Glupac® glueboards.



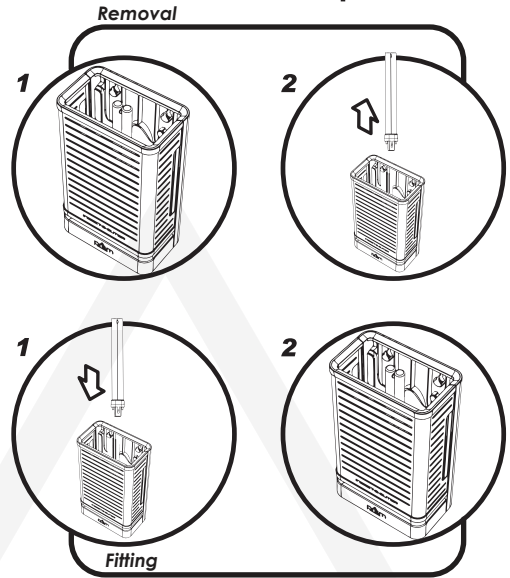
The discreet solution to a fly free home

Tube replacement

To ensure the efficiency of PRISM™ in catching flying insects, the UV tube should be replaced annually. After twelve months the phosphor coating that emits the correct wavelength of UV light has burnt away and the UV output is diminished substantially. To replace the UV tube:

1. Ensure the unit is disconnected from the power supply.
2. Remove the glueboard.
3. Holding the tube firmly, but with care, hold the unit with one hand and with the other hand gently pull the tube from the tube holder until it unclips. Do not twist the tube.
4. Fit the new tube by aligning it with the tube holder and push gently into position.
5. Replace the glueboard and reconnect the unit to the power supply.
6. Dispose of the used UV tube in conjunction with local WEEE regulations.

Always ensure that the tube used is a genuine Philips UV tube.



SPECIFICATION / REPLACEMENT PARTS

Unit	PRISM™
Voltage	230V ~ 50Hz
Dimensions(mm)	250 x 150 x 90
Coverage	30m ²
Weight	0.64 Kg
Light Output	11W
Tubes	1 x TPX11
Glueboards (x6)	INL212