

**Flypod™ is an insect control unit with patented\* hygienic glueboard removal system, utilising a high powered UV tube to attract the insect and a pheromone impregnated glueboard to trap it.**

#### DISCREET INSECT TRAPS

**Flypod™** is the modern answer to glueboard flying insect control for homes and businesses.

The instructions given here are intended to help you operate the **Flypod™** equipment at maximum efficiency. Please read and keep for future reference.

#### WARNING

FLYPOD™ IS ONLY SUITABLE FOR INDOOR USE AND IS NOT SUITABLE FOR USE IN BARNES, STABLES AND SIMILAR LOCATIONS.

#### INSTALLATION

Your **Flypod™** unit requires certain conditions to ensure the effective control of flying insects in your premises:

1. It should be correctly sited.
2. It should be the correct model for the area to be protected.
3. It should be in operation for 24 hours a day.
4. The tube and starter must be replaced every 12 months.
5. The glueboard should be replaced every 4 weeks.

#### POWER REQUIREMENTS

**Flypod™** units are designed to operate from the following power supply:

220V - 240V ~ 50Hz

Therefore, please ensure that your unit is compatible with the electricity supply in your premises. Make sure the unit is connected to an earthed electrical supply via a socket outlet of compatible rating.

#### WARNING - THIS APPLIANCE MUST BE EARTHED

#### SITING

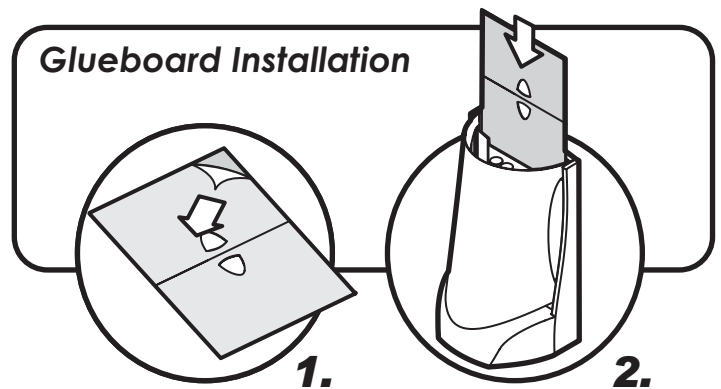
Applications of **Flypod™** obviously vary depending on the location. Should any queries arise on siting, etc. please contact your supplier. As a general rule, the UV light from the **Flypod™** unit should be visible from every part of the room.

#### ASSEMBLY

When you first receive your **Flypod™**, check that you have all the correct parts. You should have:

- 1 x Product
- 1 x Glueboard
- 1 x 18Watt Tube

To assemble, first attach the tube to the base, by lining up the four connector pins and pushing into place. Then peel back the protective paper from the glueboard (1) and discard. Then slide the glueboard into the runners (2).



#### SERVICING

BEFORE ANY FORM OF SERVICING, ENSURE THAT THE UNIT IS DISCONNECTED FROM THE MAINS SUPPLY.

To maintain the units efficiency, replace the UV fluorescent tube every 9 to 12 months, making sure the replacement tube is the correct type - obtainable from the supplier or P&L Systems Ltd. The glueboard should be changed every 4 weeks.

#### GUARANTEE

Your **Flypod™** unit has a one year guarantee (excluding tubes.) If a fault occurs within twelve months P&L Systems Ltd will replace your unit, provided the unit is returned.

This guarantee only applies if genuine P&L Systems Ltd spare parts are used.

N. B. TUBES ARE NOT GUARANTEED

## MAINTENANCE

BEFORE ANY FORM OF MAINTENANCE, ALWAYS ENSURE THAT THE UNIT IS DISCONNECTED FROM THE MAINS SUPPLY.

### GLUEBOARD REPLACEMENT

The **Flypod™** utilises a patented\* hygienic glueboard removal system.

The glueboard should be replaced every four weeks.

To replace the glueboard (see adjacent diagram):

1. Position the **Flypod™** so the back is facing you.
2. Using one hand to support the unit use your thumb and forefinger of your other hand to gently pull the glueboard out through the oval slot in the back of the unit. As you pull the glueboard out through the slot it will close up on itself sealing in the flies.
3. Once the glueboard is free from the unit discard into a bin.
4. Slide a new glueboard into position as described on the first page of this instruction sheet.

### CLEANING

It is recommended that you clean your **Flypod™** every time you replace the glueboard. Once the glueboard is removed, thoroughly wipe down your **Flypod™** with a soft damp cloth, removing any build up of dust or dirt.

### TUBE REPLACEMENT

To ensure the optimum effectiveness of your **Flypod™**, the UV tube should be replaced every 9-12 months.

To replace the tube, remove the old tube by pulling it gently out from the base (1) and push the new tube into the four connection holes (2).

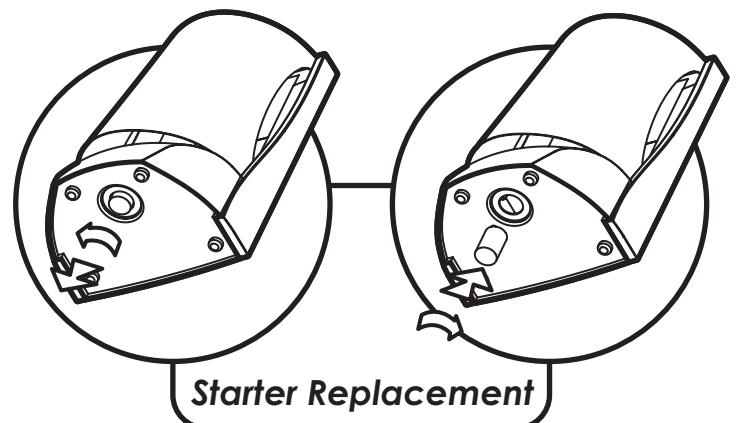
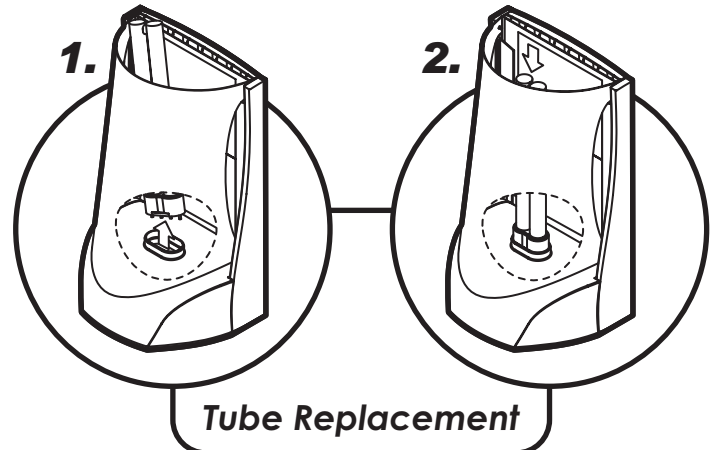
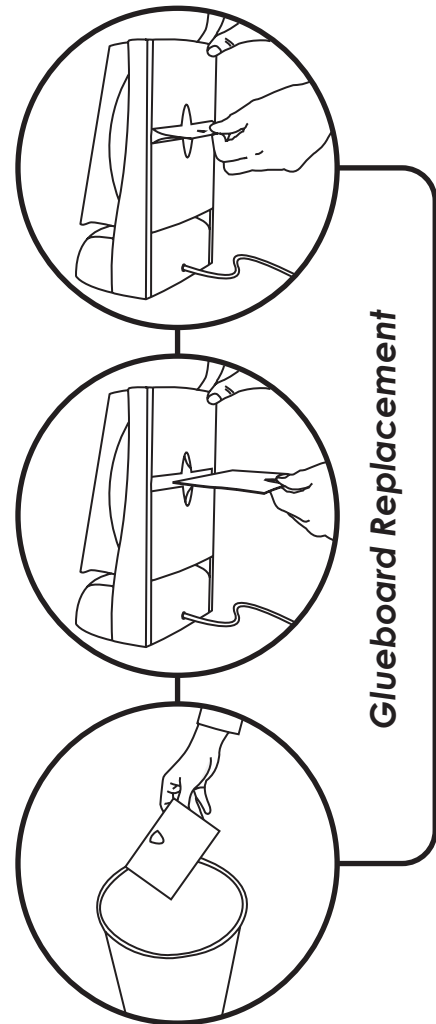
### STARTER REPLACEMENT

The starter should be replaced at the same 9-12 month interval as the tube.

To replace the starter, release the used starter by turning anti-clockwise and pulling free. Insert the new starters and turn clockwise until locked in position.

#### SPECIFICATION / REPLACEMENT PARTS

<b>Unit</b>	Flypod™
<b>Voltage</b>	240V - 50Hz
<b>Dimensions (mm)</b>	W - 300 x H - 190 x D - 140
<b>Coverage</b>	50m <sup>2</sup>
<b>Weight</b>	1.3kg
<b>Light Output</b>	18W
<b>Tubes</b>	1 x 18w PL (I815)
<b>Starter</b>	1 x S2 (I154)
<b>Glueboard X6</b>	White (INF252)



\*Patent Applied